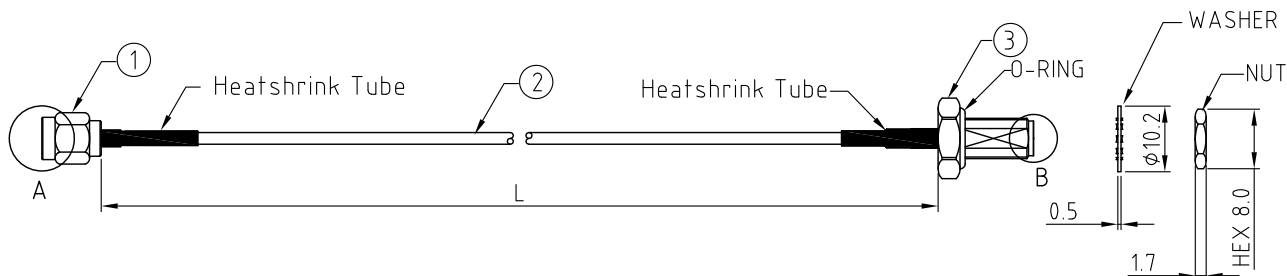


CABLE 234 RF: RP SMA STRAIGHT PLUG + RP SMA STRAIGHT BULKHEAD JACK W/O-RING RATED TO IP67/68 + MULTIPLE CABLE SIZES

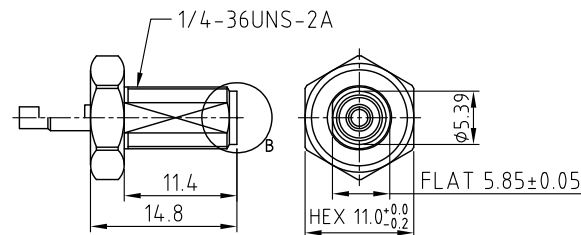
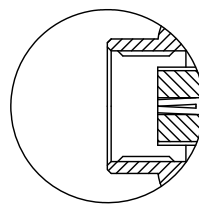
SPECIFICATIONS :

1. RP SMA STRAIGHT PLUG, P/N:
 FOR RG178 CABLE: RFCT-SMA017-M78.
 FOR ϕ 1.13MM CABLE: RFCT-SMA042-M13.
 FOR RG316 CABLE: RFCT-SMA017-M74.
2. COAXIAL CABLE, SEE P/N FOR DETAIL.
3. RP SMA STRAIGHT BULKHEAD JACK W/O-RING RATED TO IP67/68, P/N:
 FOR ϕ 1.13MM~RG178 CABLE: RFCT-SMA008-F78.
 FOR RG316 CABLE: RFCT-SMA008-F74.

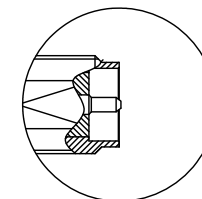


ENVIRONMENTAL:

- A. BULKHEAD MOUNTED CONNECTOR (RFCT-SMA008-Fxx) TESTED TO THE FOLLOWING SPECIFICATION:
- i. IP6X - DUST TIGHT - NO PARTICLE INGRESS.
 - ii. IPX7 WATERPROOF FOR 30 MINUTES UP TO 1 METER UNDERWATER.
 - iii. IPX8 WATERPROOF FOR 48 HOURS AT 1 METER UNDERWATER.
 - iv. IPX8 WATERPROOF FOR 12 HOURS AT 5 METERS UNDERWATER.
 - v. PRESSURE TEST - 1 BAR FOR 10 SECONDS.



SMA JACK DETAIL DRAWING



NOTES:

1. WORKING FREQUENCY RANGE: DC-3GHz.
2. OPERATING TEMPERATURE: -40°C~+125°C
3. IMPEDANCE: 50 OHM.

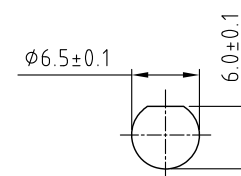
HOW TO ORDER

CABLE 234 RF - X X X X - X - X

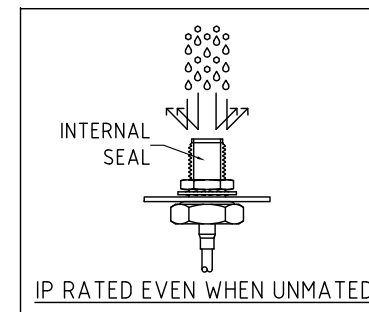
"L" LENGTH IN MM:
 eg: 100MM = 0100
 (MIN. 0050-MAX.2000)
 STANDARD = 0100, 0150, 0200)
 Tolerance: <50mm: \pm 2mm.
 51-200mm: \pm 5mm.
 201-500mm: \pm 7mm.
 >501mm: \pm 10mm.

CABLE SIZE OPTIONS:
 1 = RG178 CABLE, COLOR: BROWN.
 2 = ϕ 1.13MM CABLE, COLOR: GRAY.
 3 = RG316 CABLE, COLOR: BROWN.

WASHER AND NUT OPTIONS:
 BLANK = SEPARATELY PACKED (STANDARD)
 A = ALL ASSEMBLED WITH CONNECTOR



RECOMMENDED SMA MOUNTING HOLE



REV. DATE & DRN
10 28/05/16 - R/JH RELEASE
11 20/02/17 - NYW
ADD I35 CABLE OPTION
12 ADD I36 I37 NYW
ADD I38 I39 I40 I41 I42 I43 I44 I45 I46 I47 I48 I49 I50 I51 I52 I53 I54 I55 I56 I57 I58 I59 I60 I61 I62 I63 I64 I65 I66 I67 I68 I69 I70 I71 I72 I73 I74 I75 I76 I77 I78 I79 I80 I81 I82 I83 I84 I85 I86 I87 I88 I89 I90 I91 I92 I93 I94 I95 I96 I97 I98 I99 I100 I101 I102 I103 I104 I105 I106 I107 I108 I109 I110 I111 I112 I113 I114 I115 I116 I117 I118 I119 I120 I121 I122 I123 I124 I125 I126 I127 I128 I129 I130 I131 I132 I133 I134 I135 I136 I137 I138 I139 I140 I141 I142 I143 I144 I145 I146 I147 I148 I149 I150 I151 I152 I153 I154 I155 I156 I157 I158 I159 I160 I161 I162 I163 I164 I165 I166 I167 I168 I169 I170 I171 I172 I173 I174 I175 I176 I177 I178 I179 I180 I181 I182 I183 I184 I185 I186 I187 I188 I189 I190 I191 I192 I193 I194 I195 I196 I197 I198 I199 I200
13 27/05/19 NYW
ADD OPERATING TEMP.
14 02/09/21 NYW
ADD IMPEDANCE
15 19/07/22 NYW
ADD CABLE SIZE 3 OPTION.
AMEND OPERATING TEMP.
16 03/03/24 - CC
ADD IP RATING VIEW

Scale: NTS	THIRD ANGLE	Unstated .X .XX .XXX ANGLES	Tolerances: N/A N/A N/A N/A
Drawn: CC			
App'd: XXX	Title CABLE ASSEMBLY		
Date: 3 MAR. '24	Revision: 1.6	Unit: mm	

NAUTILUS
IP Rated RF Products

GRADCONN
www.gradconn.com

Type: Cable 234 RF
CABLE 234 RF
Drawing Number:
Sheet 1 of 1
Drawing © E and O E